



**EZ1™**

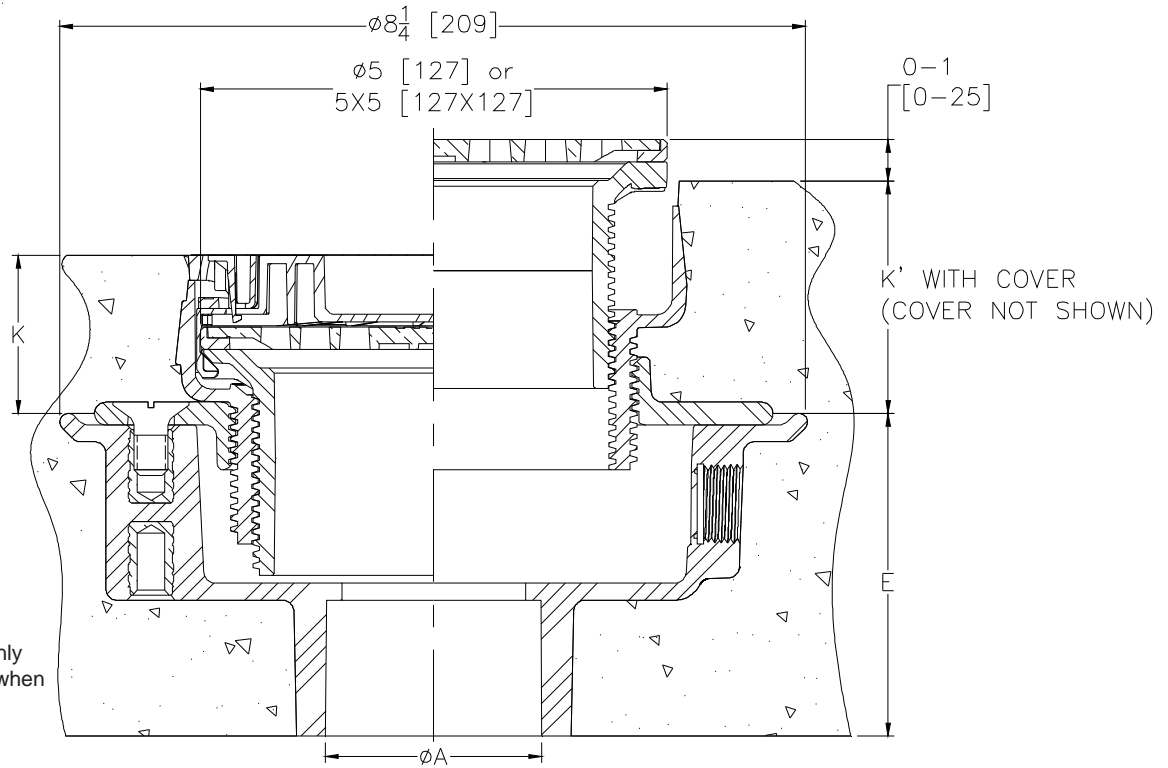
5" Top Assembly Adjustable Floor Drain with EZ1™ Technology

**SPECIFICATION SHEET**

TAG \_\_\_\_\_

**PATENT PENDING**

Dimensional Data (inches and [ mm ]) are Subject to Manufacturing Tolerances and Change Without Notice



Note:  
Minimum K Dimension is Only Possible with -LR Option when using Square Strainer

Dimensions in Inches [mm]								Approx. Wt. Lbs [kg]	Strainer Open Area Sq. In. [cm <sup>2</sup> ]	Strainer Type
Product Number		A	E	K		K'				
PVC Body	ABS Body	Pipe Size	Body Height	Min	Max	Min	Max			
EZ1-PV2	EZ1-AB2	2-3 [51-76]	3-9/16 [91]	1-25/32 [45]	2-31/32 [75]	2-9/32 [58]	3-15/32 [88]	4 [2]	6-1/4 [40]	Nickel Bronze Round
EZ1-PV3	EZ1-AB3	3-4 [76-102]	3-9/16 [91]	1-25/32 [45]	2-31/32 [75]	2-9/32 [58]	3-15/32 [88]	4 [2]	6-1/4 [40]	Nickel Bronze Round
EZ1-PV4	EZ1-AB4	4 [102]	3-13/16 [97]	1-25/32 [45]	2-31/32 [75]	2-9/32 [58]	3-15/32 [88]	5 [2]	6-1/4 [40]	Nickel Bronze Round
EZ1-PV2-ST	EZ1-AB2-ST	2-3 [51-76]	3-9/16 [91]	1-31/32 [50]	3-1/8 [79]	2-15/32 [63]	3-5/8 [92]	5 [2]	9 [58]	Nickel Bronze Square
EZ1-PV3-ST	EZ1-AB3-ST	3-4 [76-102]	3-9/16 [91]	1-31/32 [50]	3-1/8 [79]	2-15/32 [63]	3-5/8 [92]	5 [2]	9 [58]	Nickel Bronze Square
EZ1-PV4-ST	EZ1-AB4-ST	4 [102]	3-13/16 [97]	1-31/32 [50]	3-1/8 [79]	2-15/32 [63]	3-5/8 [92]	6 [3]	9 [58]	Nickel Bronze Square
EZ1-PV2-SS	EZ1-AB2-SS	2-3 [51-76]	3-9/16 [91]	1-25/32 [45]	2-31/32 [75]	2-9/32 [58]	3-15/32 [88]	4 [2]	6-1/4 [40]	Stainless Steel Round
EZ1-PV3-SS	EZ1-AB3-SS	3-4 [76-102]	3-9/16 [91]	1-25/32 [45]	2-31/32 [75]	2-9/32 [58]	3-15/32 [88]	4 [2]	6-1/4 [40]	Stainless Steel Round
EZ1-PV4-SS	EZ1-AB4-SS	4 [102]	3-13/16 [97]	1-25/32 [45]	2-31/32 [75]	2-9/32 [58]	3-15/32 [88]	5 [2]	6-1/4 [40]	Stainless Steel Round
EZ1-PV2-ST-SS	EZ1-AB2-ST-SS	2-3 [51-76]	3-9/16 [91]	1-31/32 [50]	3-1/8 [79]	2-15/32 [63]	3-5/8 [92]	5 [2]	9 [58]	Stainless Steel Square
EZ1-PV3-ST-SS	EZ1-AB3-ST-SS	3-4 [76-102]	3-9/16 [91]	1-31/32 [50]	3-1/8 [79]	2-15/32 [63]	3-5/8 [92]	5 [2]	9 [58]	Stainless Steel Square
EZ1-PV4-ST-SS	EZ1-AB4-ST-SS	4 [102]	3-13/16 [97]	1-31/32 [50]	3-1/8 [79]	2-15/32 [63]	3-5/8 [92]	6 [3]	9 [58]	Stainless Steel Square

**ENGINEERING SPECIFICATION:**

Zurn EZ1™ floor and shower drain, PVC or ABS solvent weld body with bottom outlet and 1/2" [13] trap primer connection knock-out plug, combination invertible membrane clamp and adjustable collar with seepage slots and top assembly. EZ1™ drainage series is engineered to simplify product installation, comprised of concrete shield, up to 1" [25] of vertical post pour adjustment, pre-packaged shims for tilt correction and integrated self-contained square or round light duty strainer in nickel bronze or stainless steel with rough-in cover for protection during concrete pour.

**SUFFIXES**

- \_\_\_ -EF 3/4 [19] Extension Frame
- \_\_\_ -LR Low Rough-In (Square Only)
- \_\_\_ -SA Stabilizer Assembly (See Z1035)
- \_\_\_ -SQ Stabilizer Q-Deck (See Z1035-Q)
- \_\_\_ -SR Stabilizer Ring
- \_\_\_ -TSP Trap Seal Protection Device (Size Matches Drain Outlet Selected) (See Z1072)
- \_\_\_ -U 2 - 3-1/4 [51-83] High Post-Pour Extension Adapter
- \_\_\_ -UP 1-3/4 [44] Pre-Pour Adjustment Extension Adapter
- \_\_\_ -VP Vandal-Proof Secured Top