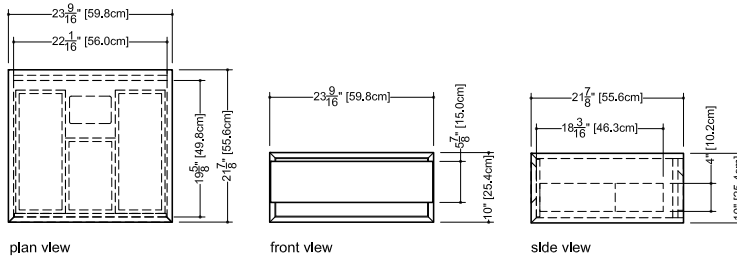


**M Collection**  
Wall-mount vanity  
10" height



# Furniture

**Wall-mount vanity M 2410 WM – 1 drawer – 24" length**  
21 7/8" depth x 23 9/16" length x 10" height – 557 x 598 x 254 mm



**finishes and colors**

**oak**

natural  
wenge  
white  
black  
stone harbour grey  
coffee bean  
smoked

**walnut**

natural  
natural no calico  
chocolate

**premium wood**

torrified eucalyptus  
mozambique

**matte lacquer\***

white  
stone harbour grey  
black

**high gloss lacquer\*\***

white

- 45 degree bevel cuts precluding the need for drawer hardware
- All natural wood veneer
- AWI rated level 5 marine grade finish for moisture resistance and durability (industry's highest finishing class)
- Finished vanity interiors in addition to front and sides
- Solid maple dovetailed drawer
- Slow closing ball bearing glides
- Vanity top comes fully finished. Can be pre-cut at factory, upon request, if ordered with a vcs/vovs sink.
- **Special wall preparation recommendations:**  
the distance between studs should not exceed 16". Each stud should be reinforced vertically by 2" x 3" wooden studs and horizontally with 2" x 6" wooden studs at a height of 30" all along the width of the vanity.

\*ATTENTION: Vessel sink not recommended with this finish

\*\*ATTENTION: High-Gloss finish on sides and drawer facade only. Bottom and interior in white mat. This finish should only be ordered with an integrated countertop (vessel sink not recommended)

**Drawers configuration**



Horseshoe

WETSTYLE cannot be held responsible for any technical errors and reserves the right to make revisions without notice.

Approximate measurement.  
The manufacturer accepts 1/4" (6.35mm) variance.

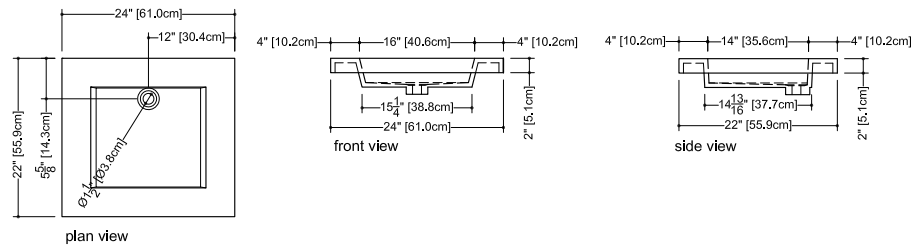
www.WETSTYLE.COM - Montreal - Canada  
Tel. 1 888.536.9001 - service@wetstyle.com



**Compatible Integrated Countertop for M 2410 WM vanity (countertop sold separately)**

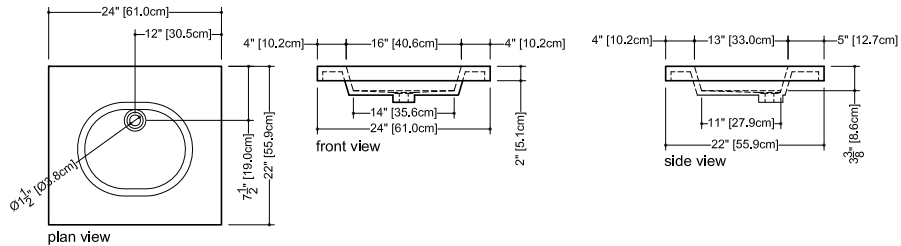
**Cube Collection Lavatories\_22" depth x 24" length x 2" height - 559 x 610 x 51 mm**

**VCS 24**



**Ove Collection Integrated Countertop\_22" depth x 24" length x 2" height - 559 x 610 x 51 mm**

**VOVS 24**



**Also compatible with the following WETSTYLE vessel sink models:**

VBE821A, VC815A, VC821A, VOV815A, VOV821A, VCR821A, VTP821A

WETSTYLE cannot be held responsible for any technical errors and reserves the right to make revisions without notice.

Approximate measurement.  
The manufacturer accepts  $\frac{1}{4}$ " (6.35mm) variance.

www.WETSTYLE.COM - Montreal - Canada  
Tel. 1 888.536.9001 - service@wetstyle.com



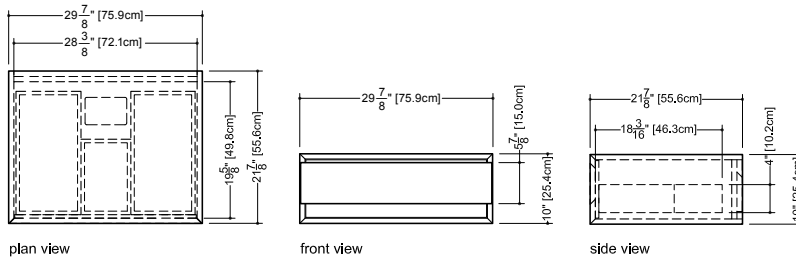
**M Collection**  
Wall-mount vanity  
10" height



# Furniture

## Wall-mount vanity M 3010 WM – 1 drawer – 30" length

21 7/8" depth x 29 7/8" length x 10" height – 557 x 759 x 254 mm



### finishes and colors

#### oak

natural  
wenge  
white  
black  
stone harbour grey  
coffee bean  
smoked

#### walnut

natural  
natural no calico  
chocolate

#### premium wood

torrified eucalyptus  
mozambique

#### matte lacquer\*

white  
stone harbour grey  
black

#### high gloss lacquer\*\*

white

- 45 degree bevel cuts precluding the need for drawer hardware
- All natural wood veneer
- AWI rated level 5 marine grade finish for moisture resistance and durability (industry's highest finishing class)
- Finished vanity interiors in addition to front and sides
- Solid maple dovetailed drawer
- Slow closing ball bearing glides
- Vanity top comes fully finished. Can be pre-cut at factory, upon request, if ordered with a vcs sink.
- Special wall preparation recommendations:** the distance between studs should not exceed 16". Each stud should be reinforced vertically by 2" x 3" wooden studs and horizontally with 2" x 6" wooden studs at a height of 30" all along the width of the vanity.

\*ATTENTION: Vessel sink not recommended with this finish

\*\*ATTENTION: High-Gloss finish on sides and drawer facade only. Bottom and interior in white mat. This finish should only be ordered with an integrated countertop (vessel sink not recommended)

### Drawers configuration



Horseshoe

WETSTYLE cannot be held responsible for any technical errors and reserves the right to make revisions without notice.

Approximate measurement.  
The manufacturer accepts 1/4" (6.35mm) variance.

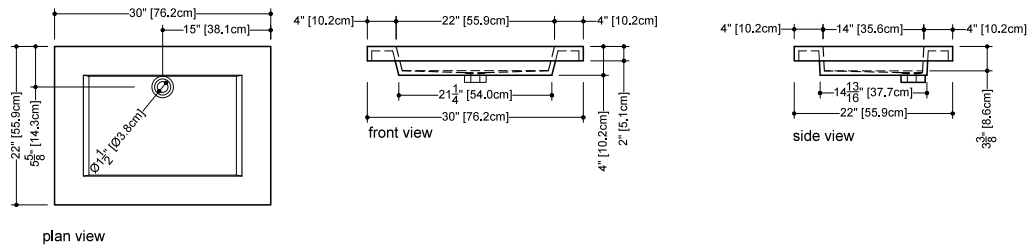
www.WETSTYLE.COM - Montreal - Canada  
Tel. 1 888.536.9001 - service@wetstyle.com



**Compatible Integrated Countertop for M 3010 WM vanity (countertop sold separately)**

**Cube Collection Lavatories\_22" depth x 30" length x 2" height - 559 x 762 x 51 mm**

**VCS 30**



**Also compatible with the following WETSTYLE vessel sink models:**

VTP821A, VCR815A, VBE821A, VC815A, VC821A, VOV815A, VOV821A

WETSTYLE cannot be held responsible for any technical errors and reserves the right to make revisions without notice.

Approximate measurement.  
The manufacturer accepts  $\frac{1}{4}$ " (6.35mm) variance.

www.WETSTYLE.COM - Montreal - Canada  
Tel. 1 888.536.9001 - service@wetstyle.com



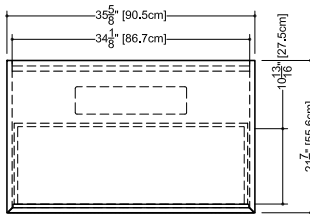
**M Collection**  
Wall-mount vanity  
10" height



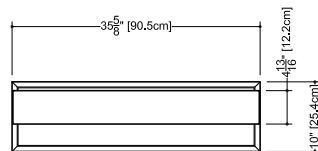
# Furniture

## Wall-mount vanity M 3610 WM – 1 drawer – 36" length

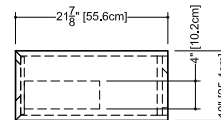
21 7/8" depth x 35 5/8" length x 10" height – 557 x 905 x 254 mm



plan view



front view



side view

### finishes and colors

#### oak

natural  
wenge  
white  
black  
stone harbour grey  
coffee bean  
smoked

#### walnut

natural  
natural no calico  
chocolate

#### premium wood

torrified eucalyptus  
mozambique

#### matte lacquer\*

white  
stone harbour grey  
black

#### high gloss lacquer\*\*

white

- 45 degree bevel cuts precluding the need for drawer hardware
- All natural wood veneer
- AWI rated level 5 marine grade finish for moisture resistance and durability (industry's highest finishing class)
- Finished vanity interiors in addition to front and sides
- Solid maple dovetailed drawer
- Drawer divider
- Slow closing ball bearing glides
- Vanity top comes fully finished. Can be pre-cut at factory, upon request, if ordered with a vcs/vovs sink.
- **Special wall preparation recommendations:**  
the distance between studs should not exceed 16". Each stud should be reinforced vertically by 2" x 3" wooden studs and horizontally with 2" x 6" wooden studs at a height of 30" all along the width of the vanity.

### Drawers configuration



\*ATTENTION: Vessel sink not recommended with this finish

\*\*ATTENTION: High-Gloss finish on sides and drawer facade only. Bottom and interior in white mat. This finish should only be ordered with an integrated countertop (vessel sink not recommended)

WETSTYLE cannot be held responsible for any technical errors and reserves the right to make revisions without notice.

Approximate measurement.  
The manufacturer accepts 1/4" (6.35mm) variance.

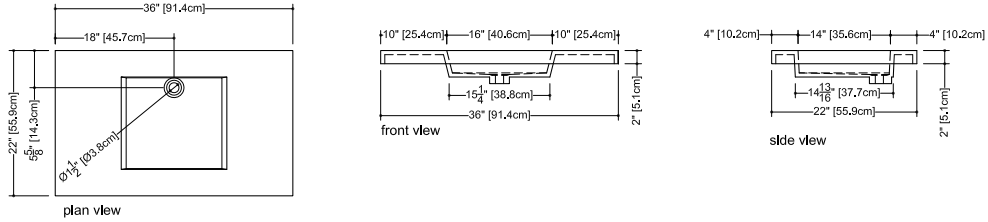
www.WETSTYLE.COM - Montreal - Canada  
Tel. 1 888.536.9001 - service@wetstyle.com



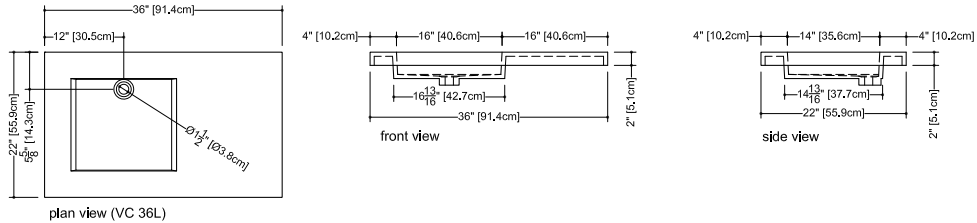
**Compatible Integrated Countertop for M 3610 WM vanity (countertop sold separately)**

**Cube Collection Lavatories\_22" depth x 36" length x 2" height - 559 x 914 x 51 mm**

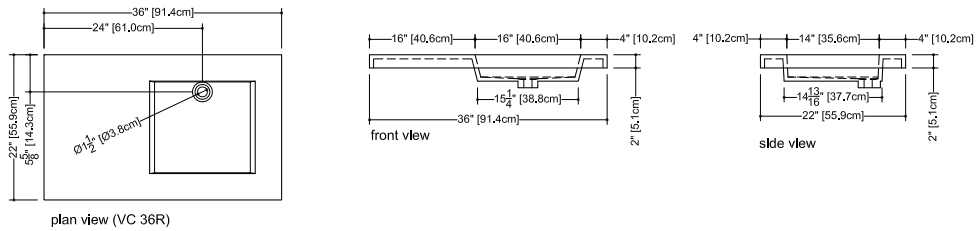
**VCS 36C**



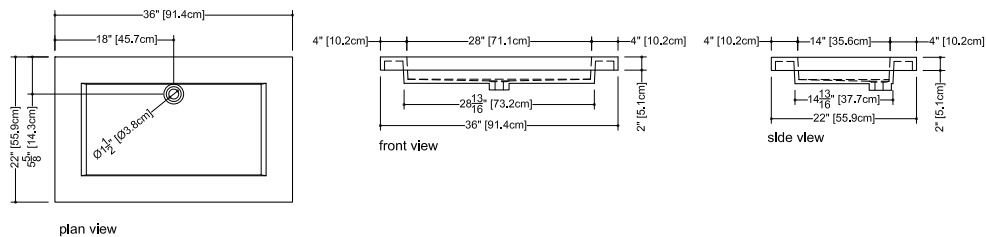
**VCS 36L**



**VCS 36R**

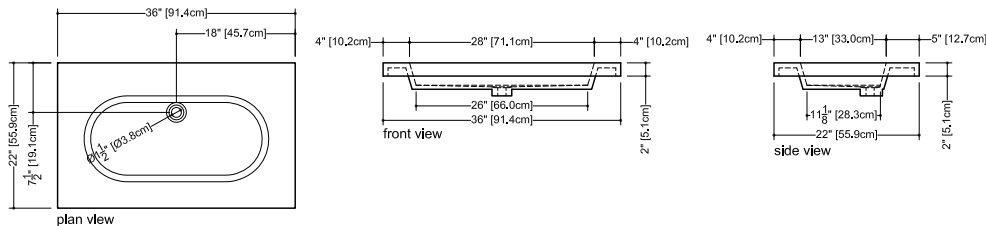


**VCS 36**



**Ove Collection Lavatories\_22" depth x 36" length x 2" height - 559 x 914 x 51 mm**

**VOVS 36**



**Also compatible with the following WETSTYLE vessel sink models:**

VBE821A, VC815A, VC821A, VOV815A, VOV821A, VCR821A, VTP821A

WETSTYLE cannot be held responsible for any technical errors and reserves the right to make revisions without notice.

Approximate measurement.  
The manufacturer accepts 1/4" (6.35mm) variance.

www.WETSTYLE.COM - Montreal - Canada  
Tel. 1 888.536.9001 - service@wetstyle.com

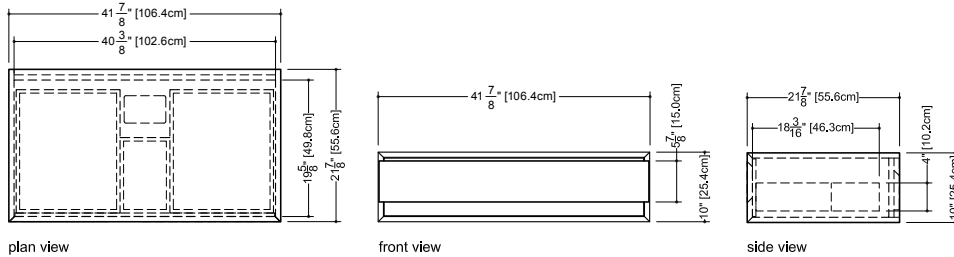


**M Collection**  
Wall-mount vanity  
10" height



# Furniture

**Wall-mount vanity M 4210 WM – 1 drawer – 42" length**  
21 7/8" depth x 41 7/8" length x 10" height – 557 x 1064 x 254 mm



**finishes and colors**

**oak**

natural  
wenge  
white  
black  
stone harbour grey  
coffee bean  
smoked

**walnut**

natural  
natural no calico  
chocolate

**premium wood**

torrified eucalyptus  
mozambique

**matte lacquer\***

white  
stone harbour grey  
black

**high gloss lacquer\*\***

white

- 45 degree bevel cuts precluding the need for drawer hardware
- All natural wood veneer
- AWI rated level 5 marine grade finish for moisture resistance and durability (industry's highest finishing class)
- Finished vanity interiors in addition to front and sides
- Solid maple dovetailed drawer
- Slow closing ball bearing glides
- Vanity top comes fully finished. Can be pre-cut at factory, upon request, if ordered with a vcs sink.
- **Special wall preparation recommendations:**  
the distance between studs should not exceed 16". Each stud should be reinforced vertically by 2" x 3" wooden studs and horizontally with 2" x 6" wooden studs at a height of 30" all along the width of the vanity.

\* ATTENTION: Vessel sink not recommended with this finish

\*\* ATTENTION: High-Gloss finish on sides and drawer facade only. Bottom and interior in white mat. This finish should only be ordered with an integrated countertop (vessel sink not recommended)

**Drawers configuration**



Horseshoe

WETSTYLE cannot be held responsible for any technical errors and reserves the right to make revisions without notice.

Approximate measurement.  
The manufacturer accepts 1/4" (6.35mm) variance.

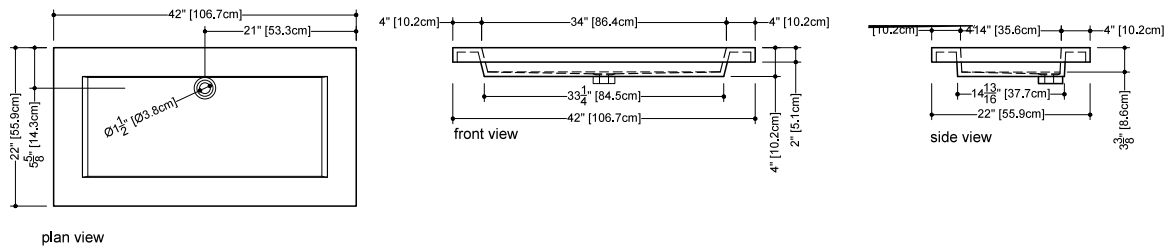
www.WETSTYLE.COM - Montreal - Canada  
Tel. 1 888.536.9001 - service@wetstyle.com



Compatible Integrated Countertop for M 4210 WM vanity (countertop sold separately)

Cube Collection Lavatories\_22" depth x 42" length x 2" height - 559 x 1069 x 51 mm

VCS 42



Also compatible with the following WETSTYLE vessel sink models:

VTP821A, VCR821A, VBE821A, VC815A, VC821A, VC836A, VOV815A, VOV821A

WETSTYLE cannot be held responsible for any technical errors and reserves the right to make revisions without notice.

Approximate measurement.  
The manufacturer accepts 1/4" (6.35mm) variance.

www.WETSTYLE.COM - Montreal - Canada  
Tel. 1 888.536.9001 - service@wetstyle.com



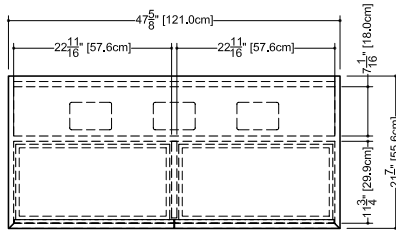


**M Collection**  
Wall-mount vanity  
10" height

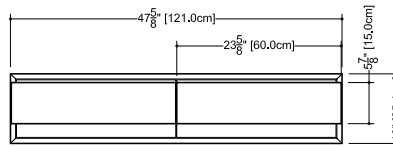


# Furniture

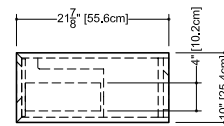
**Wall-mount vanity M 4810 WM – 2 drawers – 48" length**  
21 7/8" depth x 47 5/8" length x 10" height – 556 x 1210 x 254 mm



plan view



front view



side view

**finishes and colors**

**oak**

natural  
wenge  
white  
black  
stone harbour grey  
coffee bean  
smoked

**walnut**

natural  
natural no calico  
chocolate

**premium wood**

torrified eucalyptus  
mozambique

**matte lacquer\***

white  
stone harbour grey  
black

**high gloss lacquer\*\***

white

- 45 degree bevel cuts precluding the need for drawer hardware
- All natural wood veneer
- AWI rated level 5 marine grade finish for moisture resistance and durability (industry's highest finishing class)
- Finished vanity interiors in addition to front and sides
- Solid maple dovetailed drawers
- Drawer divider
- Slow closing ball bearing glides
- Vanity top comes fully finished. Can be pre-cut at factory, upon request, if ordered with a vcs/vovs sink.
- **Special wall preparation recommendations:**  
the distance between studs should not exceed 16". Each stud should be reinforced vertically by 2"x 3" wooden studs and horizontally with 2"x 6" wooden studs at a height of 30" all along the width of the vanity.

**Drawers configuration**



\*ATTENTION: Vessel sink not recommended with this finish

\*\*ATTENTION: High-Gloss finish on sides and drawer facade only. Bottom and interior in white mat. This finish should only be ordered with an integrated countertop (vessel sink not recommended)

WETSTYLE cannot be held responsible for any technical errors and reserves the right to make revisions without notice.

Approximate measurement.  
The manufacturer accepts 1/4" (6.35mm) variance.

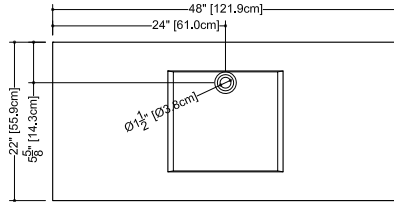
www.WETSTYLE.COM - Montreal - Canada  
Tel. 1 888.536.9001 - service@wetstyle.com



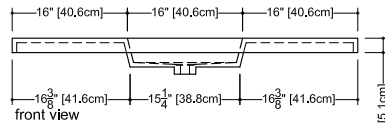
Compatible Integrated Countertop for M 4810 WM vanity (countertop sold separately)

Cube Collection Integrated Lavatories\_22" depth x 48" length x 2" height - 559 x 1219 x 51 mm

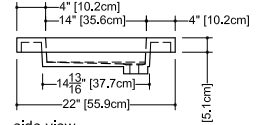
VCS 48C



plan view

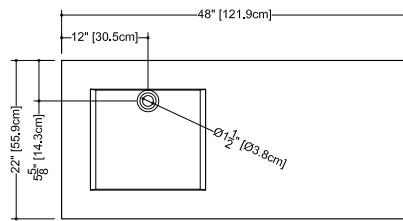


front view

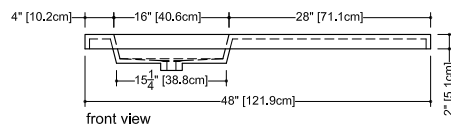


side view

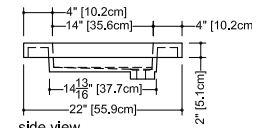
VCS 48L



plan view (VC 48L)

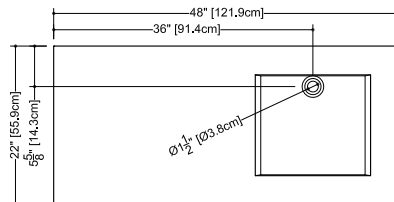


front view

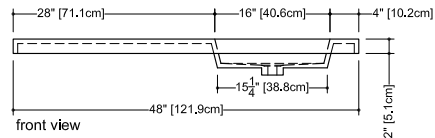


side view

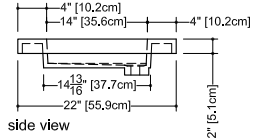
VCS 48R



plan view (VC 48R)

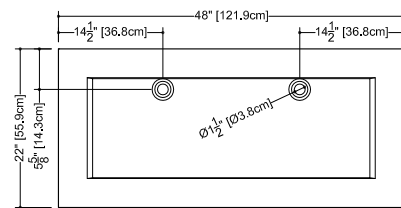


front view

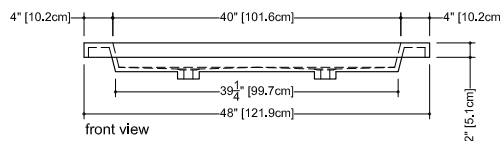


side view

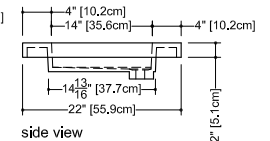
VCS 48



plan view



front view



side view

WETSTYLE cannot be held responsible for any technical errors and reserves the right to make revisions without notice.

Approximate measurement.  
The manufacturer accepts 1/4" (6.35mm) variance.

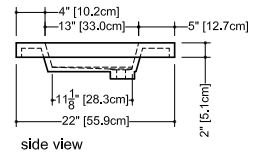
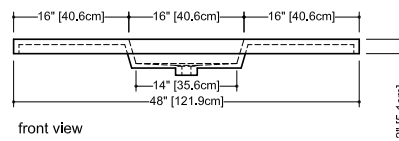
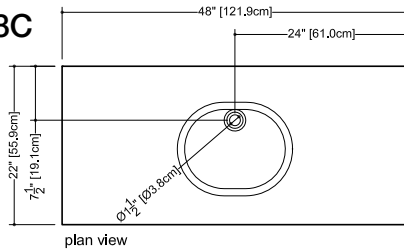
www.WETSTYLE.COM - Montreal - Canada  
Tel. 1 888.536.9001 - service@wetstyle.com



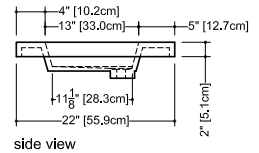
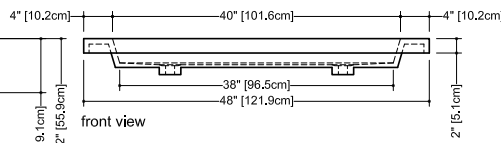
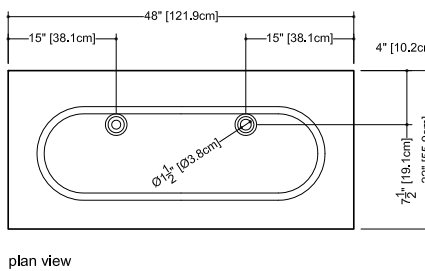
**Compatible Integrated Countertop for M 4810 WM vanity (countertop sold separately)**

**Ove Collection Lavatories\_22" depth x 48" length x 2" height - 559 x 1219 x 51 mm**

**VOVS 48C**



**VOVS 48**



**Also compatible with the following WETSTYLE vessel sink models:**

VBE821A, VBE836A, VC815A, VC821A, VC836A, VOV815A, VOV821A, VOV836A, VCR821A, VTP821A

WETSTYLE cannot be held responsible for any technical errors and reserves the right to make revisions without notice.

Approximate measurement.  
The manufacturer accepts 1/4" (6.35mm) variance.

www.WETSTYLE.COM - Montreal - Canada  
Tel. 1 888.536.9001 - service@wetstyle.com



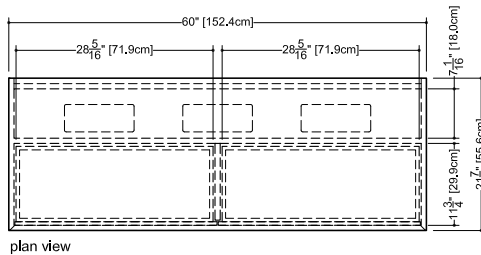
**M Collection**  
Wall-mount vanity  
10" height



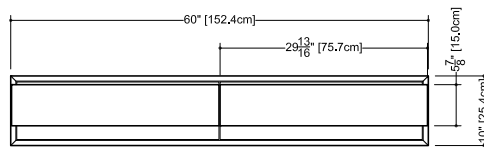
# Furniture

## Wall-mount vanity M 6010 WM – 2 drawers – 60" length

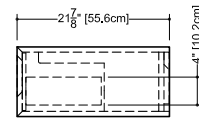
21 7/8" depth x 60" length x 10" height – 556 x 1524 x 254 mm



plan view



front view



side view

### finishes and colors

#### oak

natural  
wenge  
white  
black  
stone harbour grey  
coffee bean  
smoked

#### walnut

natural  
natural no calico  
chocolate

#### premium wood

torrified eucalyptus  
mozambique

#### matte lacquer\*

white  
stone harbour grey  
black

#### high gloss lacquer\*\*

white

- 45 degree bevel cuts precluding the need for drawer hardware

- All natural wood veneer

- AWI rated level 5 marine grade finish for moisture resistance and durability (industry's highest finishing class)

- Finished vanity interiors in addition to front and sides

- Solid maple dovetailed drawers

- Drawer divider

- Slow closing ball bearing glides

- Vanity top comes fully finished. Can be pre-cut at factory, upon request, if ordered with a vcs/vovs sink.

#### Special wall preparation recommendations:

the distance between studs should not exceed 16". Each stud should be reinforced vertically by 2"x 3" wooden studs and horizontally with 2"x 6" wooden studs at a height of 30" all along the width of the vanity.

#### Drawers configuration



3/4 deep

\*ATTENTION: Vessel sink not recommended with this finish

\*\*ATTENTION: High-Gloss finish on sides and drawer facade only. Bottom and interior in white mat. This finish should only be ordered with an integrated countertop (vessel sink not recommended)

WETSTYLE cannot be held responsible for any technical errors and reserves the right to make revisions without notice.

Approximate measurement.  
The manufacturer accepts 1/4" (6.35mm) variance.

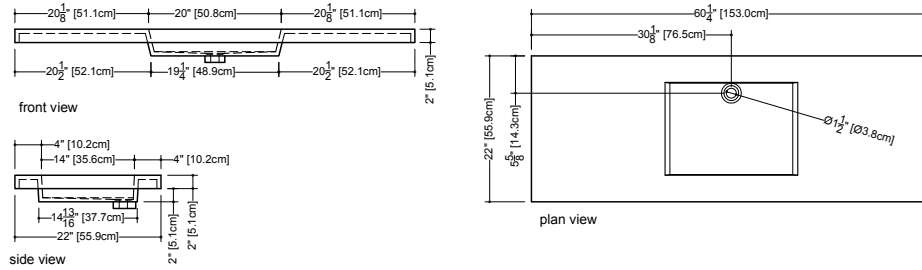
www.WETSTYLE.COM - Montreal - Canada  
Tel. 1 888.536.9001 - service@wetstyle.com



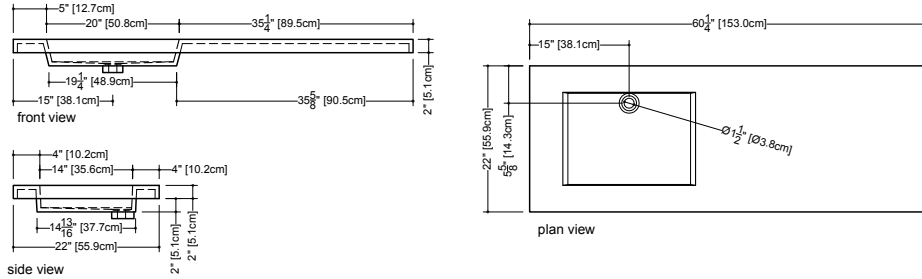
## Compatible Integrated Countertop for M 6010 WM vanity (countertop sold separately)

### Cube Collection Lavatories\_22" depth x 60 1/4" length x 2" height - 559 x 1530 x 51 mm

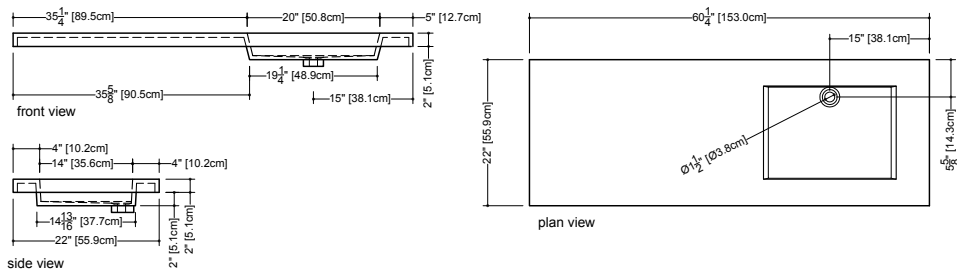
#### VCS 60C



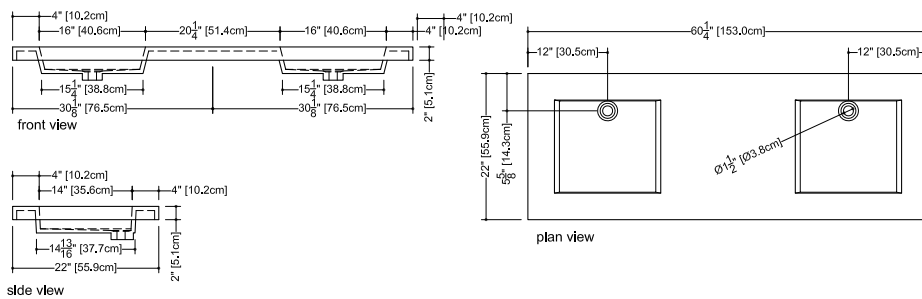
#### VCS 60L



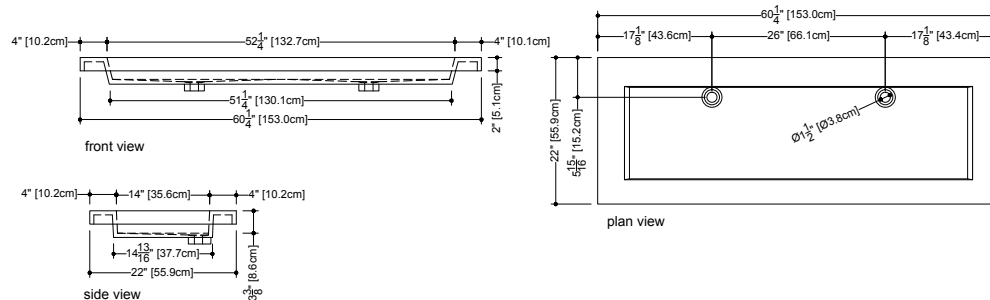
#### VCS 60R



#### VCS 60



#### VCS 60T



### Also compatible with the following WETSTYLE vessel sink models:

VBE821A, VBE836A, VC815A, VC821A, VC836A, VC848A, VOV815A, VOV821A, VOV836A, VOV848A, VCR821A, VTP821A

WETSTYLE cannot be held responsible for any technical errors and reserves the right to make revisions without notice.

Approximate measurement.  
The manufacturer accepts 1/4" (6.35mm) variance.

www.WETSTYLE.COM - Montreal - Canada  
Tel. 1 888.536.9001 - service@wetstyle.com



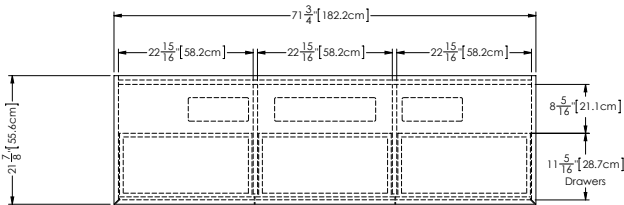
**M Collection**  
Wall-mount vanity  
10" height



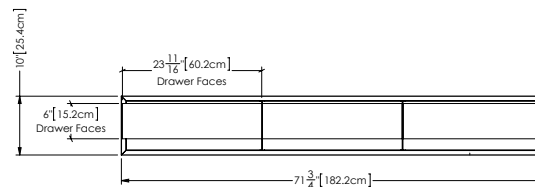
# Furniture

## Wall-mount vanity M 7210 WM – 3 drawers – 72" length

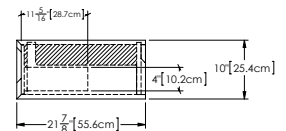
21 7/8" depth x 72" length x 10" height – 556 x 1829 x 254 mm



plan view



front view



side view

### finishes and colors

#### oak

natural  
wenge  
white  
black  
stone harbour grey  
coffee bean  
smoked

#### walnut

natural  
natural no calico  
chocolate

#### premium wood

torrified eucalyptus  
mozambique

#### matte lacquer\*

white  
stone harbour grey  
black

#### high gloss lacquer\*\*

white

- 45 degree bevel cuts precluding the need for drawer hardware
- All natural wood veneer
- AWI rated level 5 marine grade finish for moisture resistance and durability (industry's highest finishing class)
- Finished vanity interiors in addition to front and sides
- Solid maple dovetailed drawers
- Drawer divider
- Slow closing ball bearing glides
- Vanity top comes fully finished. Can be pre-cut at factory, upon request, if ordered with a vcs/vovs sink.
- **Special wall preparation recommendations:**  
the distance between studs should not exceed 16". Each stud should be reinforced vertically by 2" x 3" wooden studs and horizontally with 2" x 6" wooden studs at a height of 30" all along the width of the vanity.

### Drawers configuration



\*ATTENTION: Vessel sink not recommended with this finish

\*\*ATTENTION: High-Gloss finish on sides and drawer facade only. Bottom and interior in white mat. This finish should only be ordered with an integrated countertop (vessel sink not recommended)

WETSTYLE cannot be held responsible for any technical errors and reserves the right to make revisions without notice.

Approximate measurement.  
The manufacturer accepts 1/4" (6.35mm) variance.

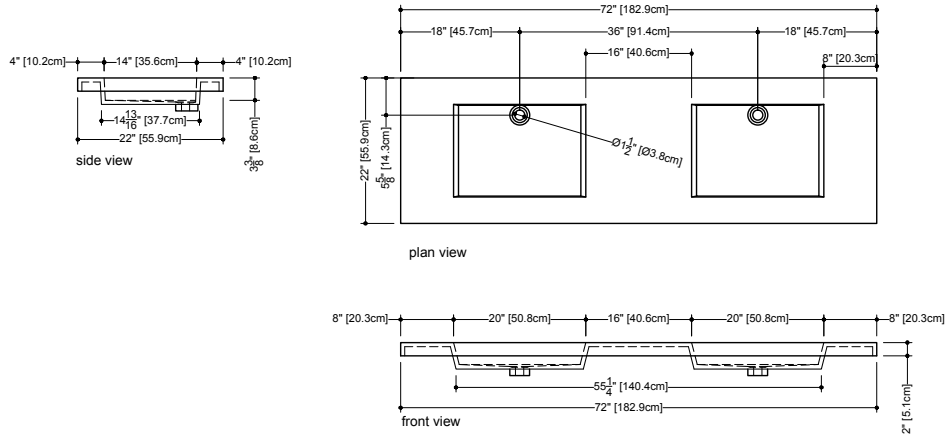
www.WETSTYLE.COM - Montreal - Canada  
Tel. 1 888.536.9001 - service@wetstyle.com



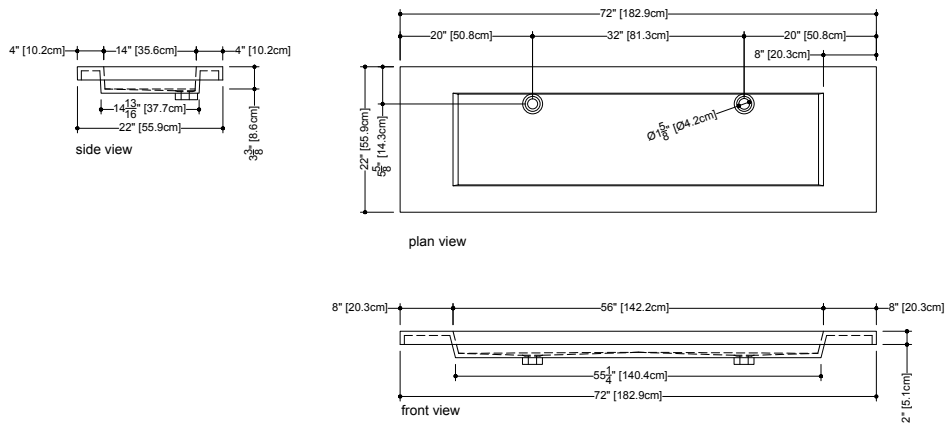
**Compatible Integrated Countertop for M 7210 WM vanity (countertop sold separately)**

**Cube Collection Lavatories\_22" depth x 72" length x 2" height - 559 x 1829 x 51 mm**

**VCS 72**



**VCS 72T**



**Also compatible with the following WETSTYLE vessel sink models:**

VBE821A, VBE836A, VC815A, VC821A, VC836A, VC848A, VOV815A, VOV821A, VOV836A, VOV848A, VCR821A, VTP821A

WETSTYLE cannot be held responsible for any technical errors and reserves the right to make revisions without notice.

Approximate measurement.  
The manufacturer accepts 1/4" (6.35mm) variance.

www.WETSTYLE.COM - Montreal - Canada  
Tel. 1 888.536.9001 - service@wetstyle.com

