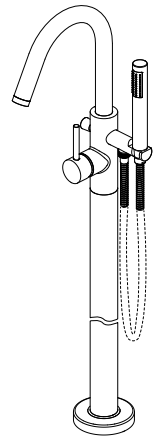


- |   |   |
|---|---|
| LG6-1MFB Finish(B) <input type="checkbox"/>   | LG6-1MFC Finish(C) <input type="checkbox"/> |
| LG6-1MFBG Finish(BG) <input type="checkbox"/> | LG6-1MFD Finish(D) <input type="checkbox"/> |
|   | LG6-1MFK Finish(K) <input type="checkbox"/> |
|   | LG6-1MFY Finish(Y) <input type="checkbox"/> |



## Specifications

- All Metal Construction
- Trim Only, Valve Not Included

### Features

- 1.8 GPM Flow Rate (Handheld)
- 8 GPM @ 60 PSI Flow Rate
- 60" Metal Hose With Matching Finish
- All Metal Construction
- Ceramic Disc Valve
- Volume and Temperature Control
- Requires OX6-270R Valve (Sold Separately)
- Optional Concrete Mounting Bracket 931-145 Available (Sold Separately)
- Pforever Warranty®

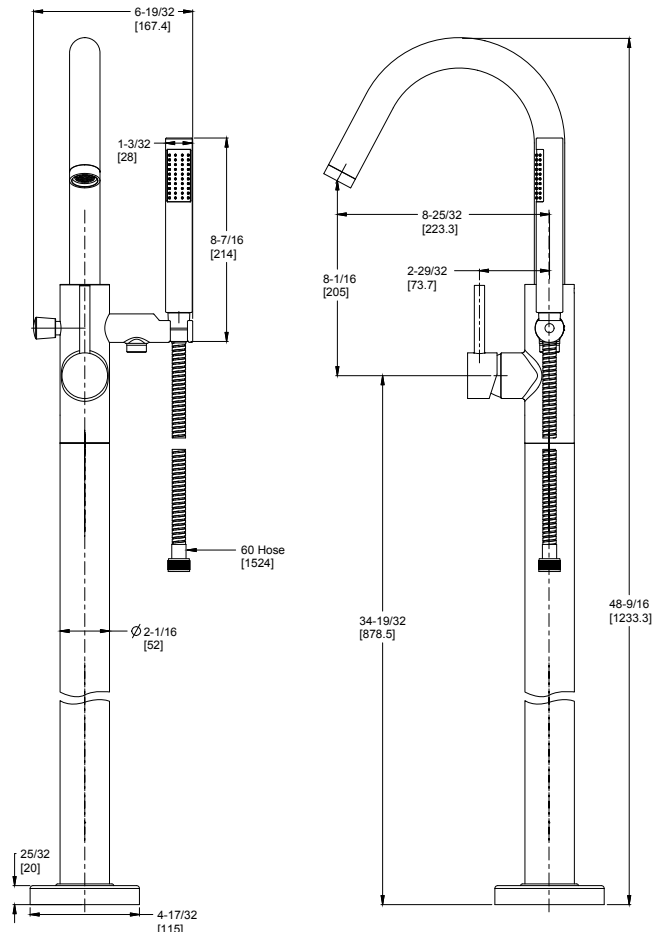
### Code Compliance

Pfister products are designed and manufactured in compliance with the following standards and codes:

- IAPMO Certified
- CSA B125 Certified
- ASME A112.18.1
- Cal Green Compliant
- CEC Compliant
- ADA Compliant-ANSI A117.1 (Lever handles only)
- ASME A112.18.3 (Backflow Prevention)
- EPA WaterSense Certification 1.8 gpm, 6.8 L/Min (Handheld)



## Dimensions



Ø3-3/8Max. Deck Hole Openings