

WORKSTATION MUWS-637GDSB



• FEATURES

- Patent pending accessories rail system
- Dura Shield scratch resistant coating
- 16-gauge type 304 stainless steel
- EZ clean bevel basin design

• TECHNICAL INFORMATION

- External dimension: 39"Lx18.5"Wx10"D
- Basin dimensions: 37"Lx16.5"Wx10"D
- 1/8" thick sound dampening pad
- Rim width: 1"
- Rim corner: 1/4" round

• FINISHES

- Gold PVD Satin Brushed stainless steel

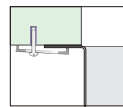
• INSTALLATION OPTIONS

- Under-mount

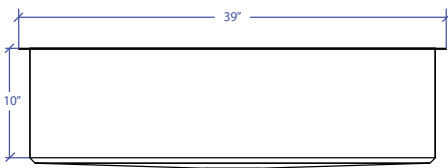
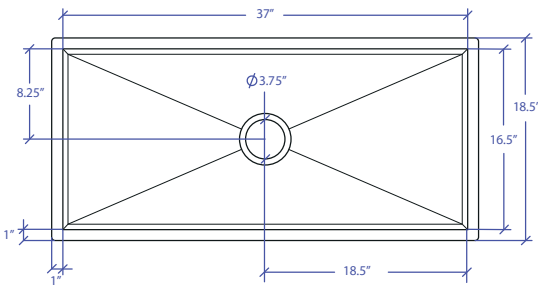
• MINIMUM CABINET SIZE (I.D.)

- Under-mount 41"

• INSTALLATION TYPE



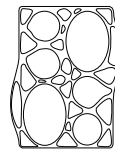
Under-mount



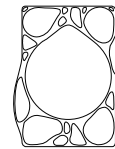
• INCLUDED ACCESSORIES



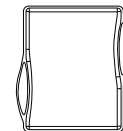
MBG-6519GDSB
Basin Grid



MWBM-651GDSB
Bain Marie



MWSM-651GDSB
Salad Mixer



MWCB-651GDBB
Cutting Board

• OPTIONAL ACCESSORIES



MWC-651GDSB
Colander



MWSS-651GDSB
Side Sink



MDC-101GDSB
Disposal Collar



MKD-101GDSB
Strainer

PROJECT INFORMATION

Project			
Date	/	/	QTY
Specifier			
Contact			
Note			