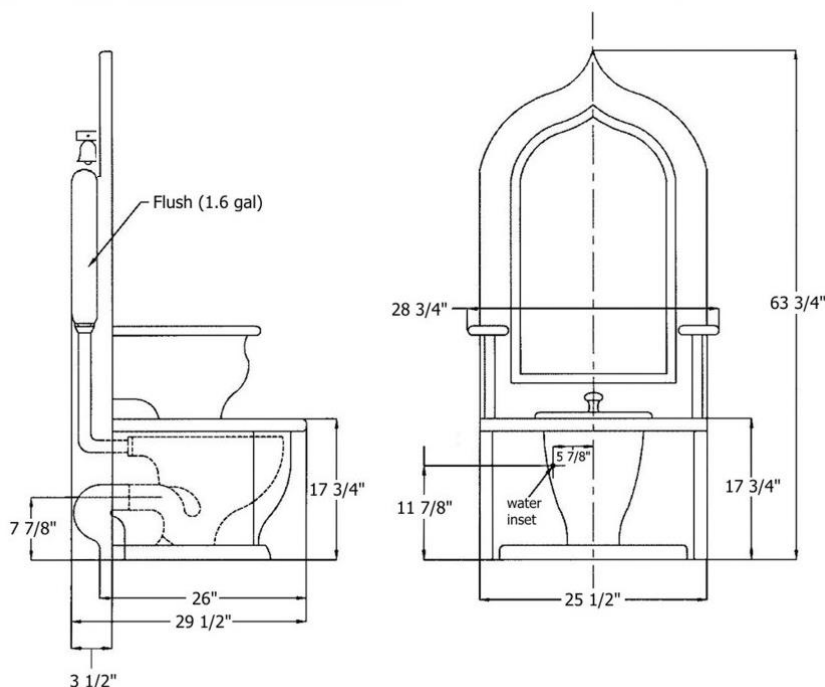


5501 & 5502 'Dagobert' Wooden Toilet Throne and Sanitary Equipment-New Style



Technical Information

- Solid ash wood.
- Please specify hand paint pattern on order.
- Please refer to **(5502)** for sanitary equipment.
- Available in Moustier Polychrome **(01)**, Moustier Bleu **(02)**, Moustier Rose **(03)**, Vieux Rouen **(04)**, Sceau Rose **(05)**, Sceau Bleu **(06)**, Berain Rose **(07)**, Berain Vert **(08)**, Berain Bleu **(09)**, Romantique **(10)**, Rouen Marly **(11)** and Avesnes **(21)**.
- Please See Cleaning Instructions:
<http://herbeau.com/CleaningAll.pdf> For Finish Care and Maintenance Information.

Please follow example when ordering parts for Dagobert Throne

- To order part#06 – Dagobert Poem Plate
 - 9900264
- For Ceramic Hand Paint Parts, Substitute Hand Paint Number in Place of **CC**

Part

Description

XX

5501 THRONE

- 01 Candle Holder
- 02 Candle
- 03 Musset Poem
- 04 Dagobert Chain
- Ceramic Handle
- 05 Bottom Front Ceramic
- Decorative Plate
- 06 Blank Ivory Dagobert
- Poem Plate
- 07 Ash Tray
- 08 Polished Brass Ring
- 09 Dagobert Music Box
- 10 Brass Arm

XX

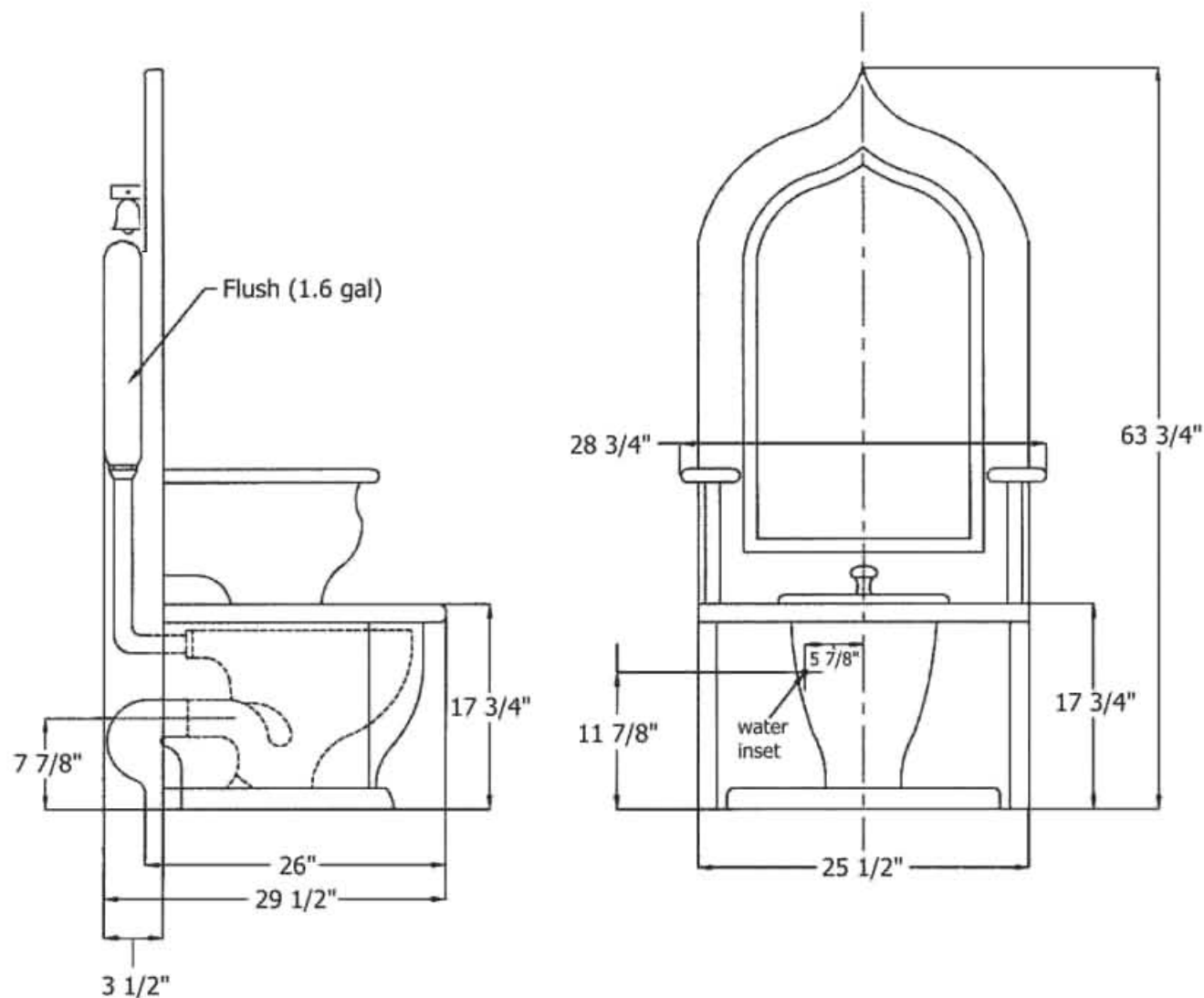
5502 SANITARY EQUIPMENT

- 01 Pucci Back Plate With
- Flush Attachment
- 02 Base Flapper Assembly
- F/5502
- 03 6595 Dagobert Toilet
- Tank Bracket
- 04 Pucci Flush
- Mechanism
- 05 80006595 Pucci
- Bracket F/Dagobert
- 06 Pucci Dagobert 6596
- O-Ring
- 07 Dagobert Flush Repair
- Kit



Herbeau®
L'Art du Sanitaire depuis 1857

5501 & 5502 'Dagobert' Wooden Toilet Throne and Sanitary Equipment



ACCESSING THE FLUSH MECHANISM IN THE DAGOBERT THRONE

TOOLS REQUIRED:

FLAT HEAD SCREW DRIVER

ADJUSTABLE WRENCH

**** TO AVOID DAMAGE TO FACE PLATE, USE A SOFT CLOTH TO PLACE THE PLATE ON, IN A SECURE AREA ****

- 1) REMOVE THE HOLD DOWN SCREWS FASTENING THE FACE PLATE TO THE DAGOBERT THRONE. *(COUNTER CLOCK WISE)*
- 2) PLACE THE PLATE ON A SOFT CLOTH. *(SEE EXAMPLE # 1)*



(EXAMPLE 1)

- 3) REMOVING THE PLATE WILL EXPOSE THE COVER PLATE TO THE FLUSH MECHANISM. *(SEE EXAMPLE # 2)*



Herbeau®
L'Art du Sanitaire depuis 1857



{EXAMPLE # 2}

- 4) REMOVE THE FLUSH MECHANISM PLATE IN *EXAMPLE # 2*, BY REMOVING THE LOCK DOWN NUTS AND WASHERS.
- 5) THIS WILL EXPOSE THE FLUSH MECHANISM. (*SEE EXAMPLE # 3*)



Herbeau®
L'Art du Sanitaire depuis 1857



{EXAMPLE # 3}

6) TO RE-ASSEMBLE, JUST REVERSE THE PROCEDURE.

PLEASE CALL US AT 1-800-547-1608 EXT 37 WITH QUESTIONS OR CONCERNS

*P/N = PART NUMBER

5501

01-P/N 960047
02-P/N 970011
03-P/N 970021
04-P/N 970012
05-P/N 970018CC
06-P/N 990264
07-P/N 970010CC
08-P/N 990043
09-P/N 990081
10-P/N 990044

5502

01-P/N 990572
02-P/N 990010
03-P/N 990120
04-P/N 990028
05-P/N 990129
06-P/N 990560
07-P/N 990724



Herbeau®
L'Art du Sanitaire depuis 1857

STEP N°1 : unscrew the ceramic plaque and unscrew the plastic cover from the tank.



STEP N°2 : pull out the plunger which is the rubber bow



STEP N° 3 Pull out the white plastic part below.



STEP N° 4 : pull out the black part below



STEP N° 5 pull out the whole system which is holding the plunger.



SRTEP N°4 : you can change the flange.



STEPN°5 : before to put the system back, after having change the flange, you can put some grease on the O rings.