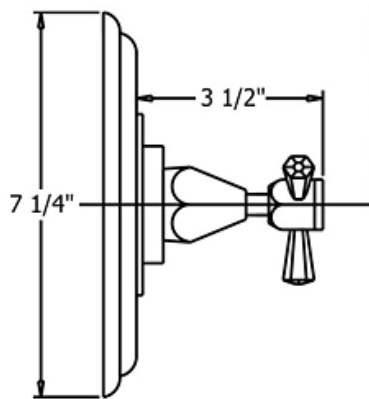


3639 - 'Monarque' 1/2" Thermostatic Valve



Part#	Description
17	Monarque Horizontal Handle Stem
18	Handle Screw
19	Monarque Insert Holder
20	Rubber O-Ring
21	Ceramic Insert
90	Monarque Insert Assembly
91	Monarque Handle Assembly

Technical Information

- Includes integral shut-off valves for hot and cold.
- Two 3/4" female inlets.
- Two 1/2" female outlets.
- Controls temperature only.
- Available finishes are French Weathered Brass (**47**), Polished Chrome (**48**), SoliBrass (**49**), Lacquered Matte Black Nickel (**50**), Old Gold (**52**), Old Silver (**53**), Polished Brass (**55**), Polished Nickel (**56**), Brushed Nickel (**57**), Satin Nickel (**60**), Antique Lacquered Copper (**67**), Antique Lacquered Brass (**68**), Weathered Brass (**70**), Lacquered Polished Black Nickel (**71**) and Lacquered Polished Copper (**80**).
- Please See Cleaning Instructions: <http://herbeau.com/CleaningAll.pdf> For Finish Care and Maintenance Information.

Part#	Description
01	1/2" Thermostatic Cartridge
02	1/2" Thermostatic Valve Hold Nut
03	Round Tube
04	Square Adapter
3+4	8" or 3" Extension Kit
05	Black Plastic Scold Stop Plate
06	Pointer Cap With Or Without Finished Trim
07	Cover Plate
08	Set Screw
11	Monarque Thermostat Number Plate
12	Swivel Bushing
15	Thermostat Control Stem
16	Monarque Handle Center

Please follow example when ordering parts for 'Monarque' 1/2" Thermostatic Valve

- To order part #07 – Cover Plate

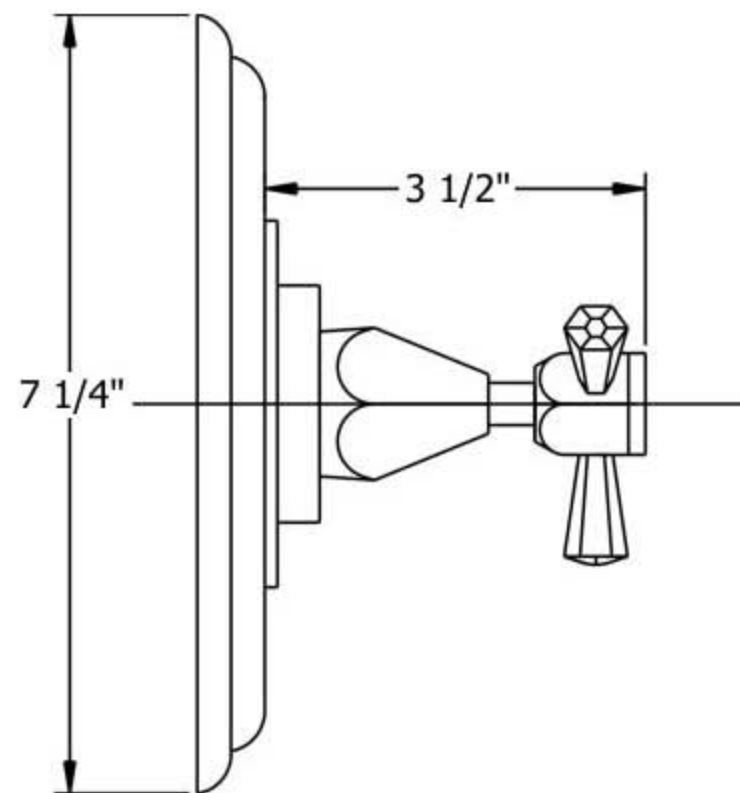
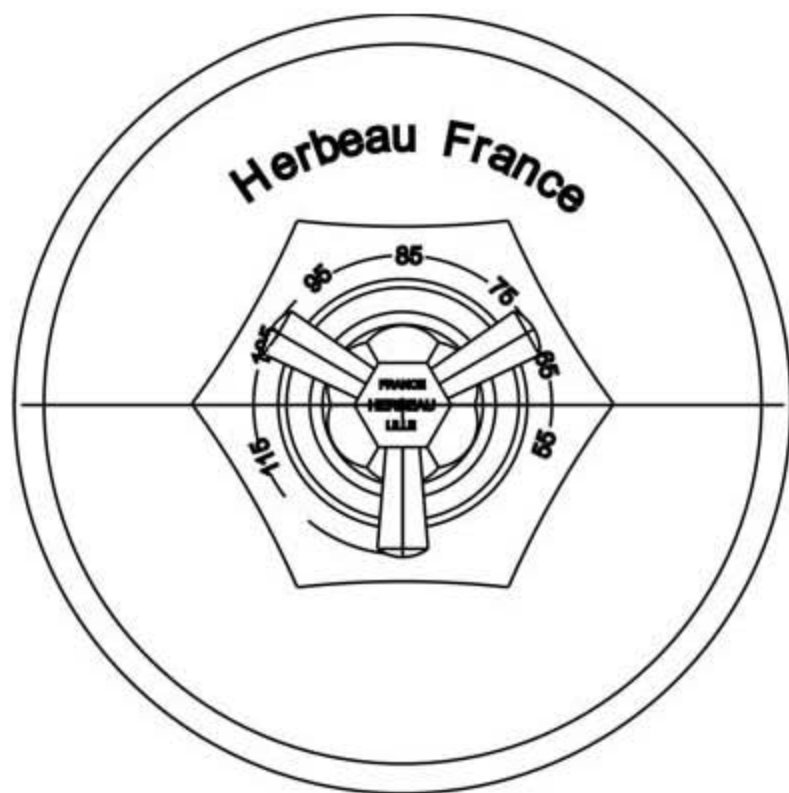
○ 950110xx

- Please substitute finish number needed in place of xx



Herbeau®
L'Art du Sanitaire depuis 1857

3639 - 'Monarque' 1/2" Thermostatic Valve

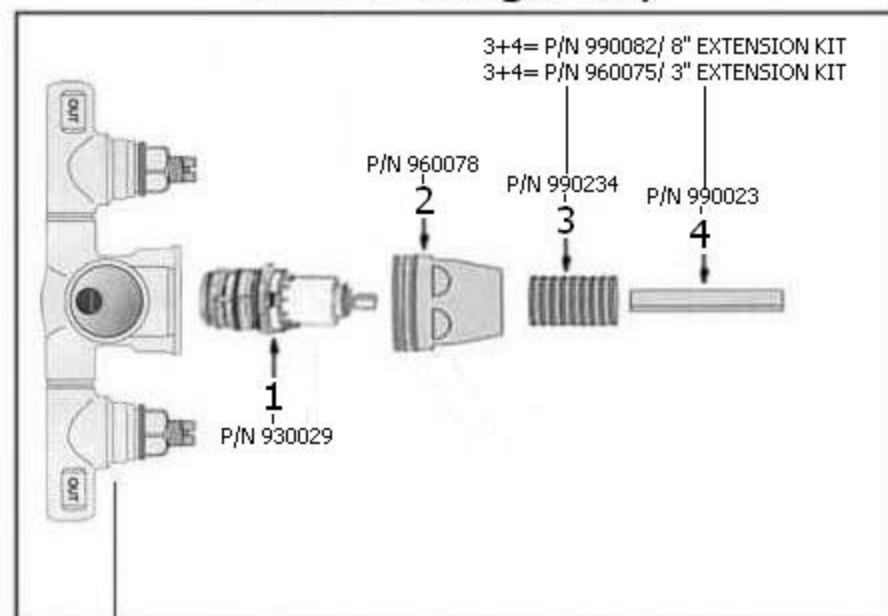


3639 - 'Monarque' 1/2" Thermostatic Valve

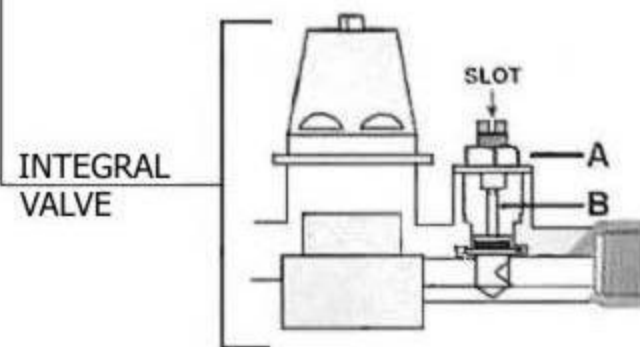
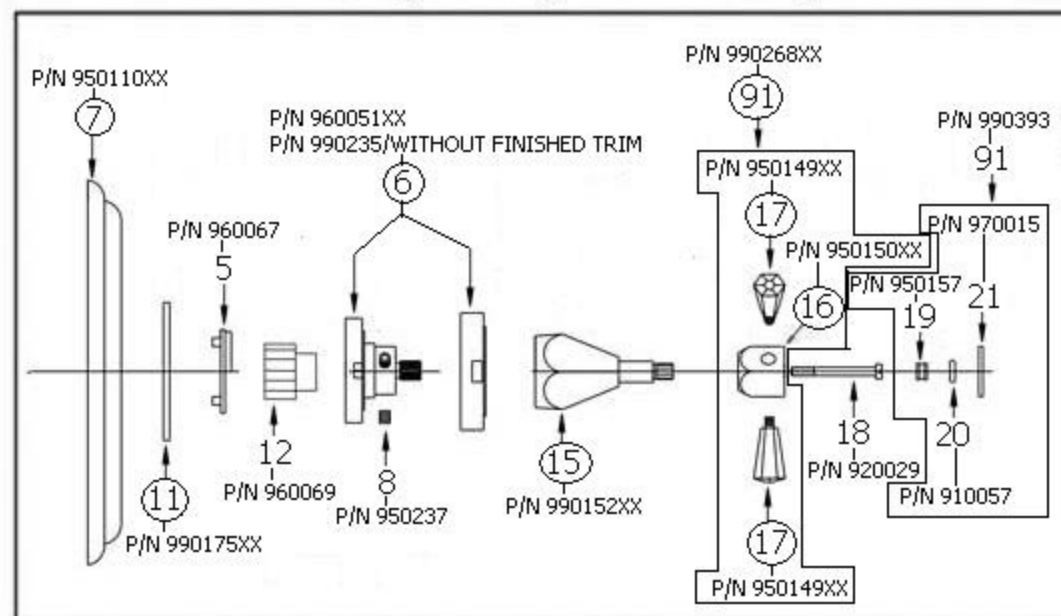
*P/N = PART NUMBER

EXPLODED VIEW

3639-R Rough only



3639(Finish)-T Trim only



○ = FINISHED PARTS
XX = TWO DIGIT FINISH CODE