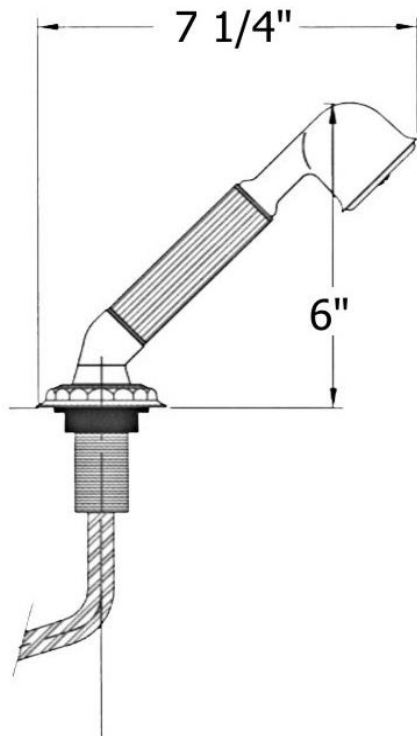


# 2244 - 'Pompadour' Personal Hand Shower



Part #	Description
01	Braided Hose
02	3/8" Washer
03	Threaded Stem
03	4 3/8" Extended Threaded Stem
04	Brass Hex Nut
05	Metal Ring & Rubber Washer
06	Low Flow Restrictor
07	Flat Rubber Washer
08	Escutcheon
09	Hand Spray Elbow - Ecobross
10	1/2" Washer
11	Metal Ring For Hand Shower
12	Metal Ring For Hand Shower
13	Finished Hand Shower Handle
95	Pompadour Complete Deck Hand Shower

## Technical Information

- Requires 1 1/4" hole drilling.
- Maximum flow rate is 1.8 GPM.
- Available finishes are French Weathered Brass (47), Polished Chrome (48), SoliBrass (49), Lacquered Matte Black Nickel (50), Old Gold (52), Old Silver (53), Polished Brass (55), Polished Nickel (56), Brushed Nickel (57), Satin Nickel (60), Antique Lacquered Copper (67), Antique Lacquered Brass (68), Weathered Brass (70), Lacquered Polished Black Nickel (71) and Lacquered Polished Copper (80).
- Please See Cleaning Instructions: <http://herbeau.com/CleaningAll.pdf> For Finish Care and Maintenance Information.

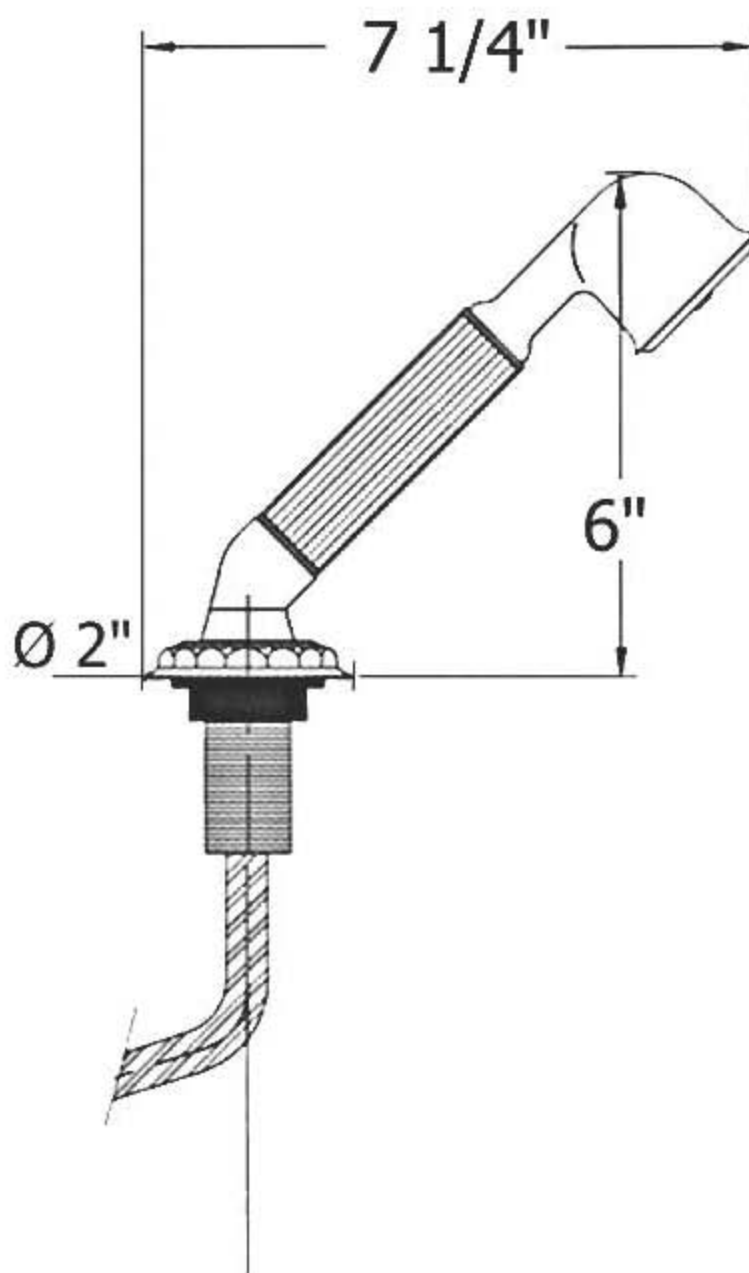
Please follow example when ordering parts for 'Pompadour' Hand Shower

- To order part#13 – Finished Hand Shower Handle
  - 970002xx
- Please substitute finish number needed in place of **xx**



**Herbeau®**  
L'Art du Sanitaire depuis 1857

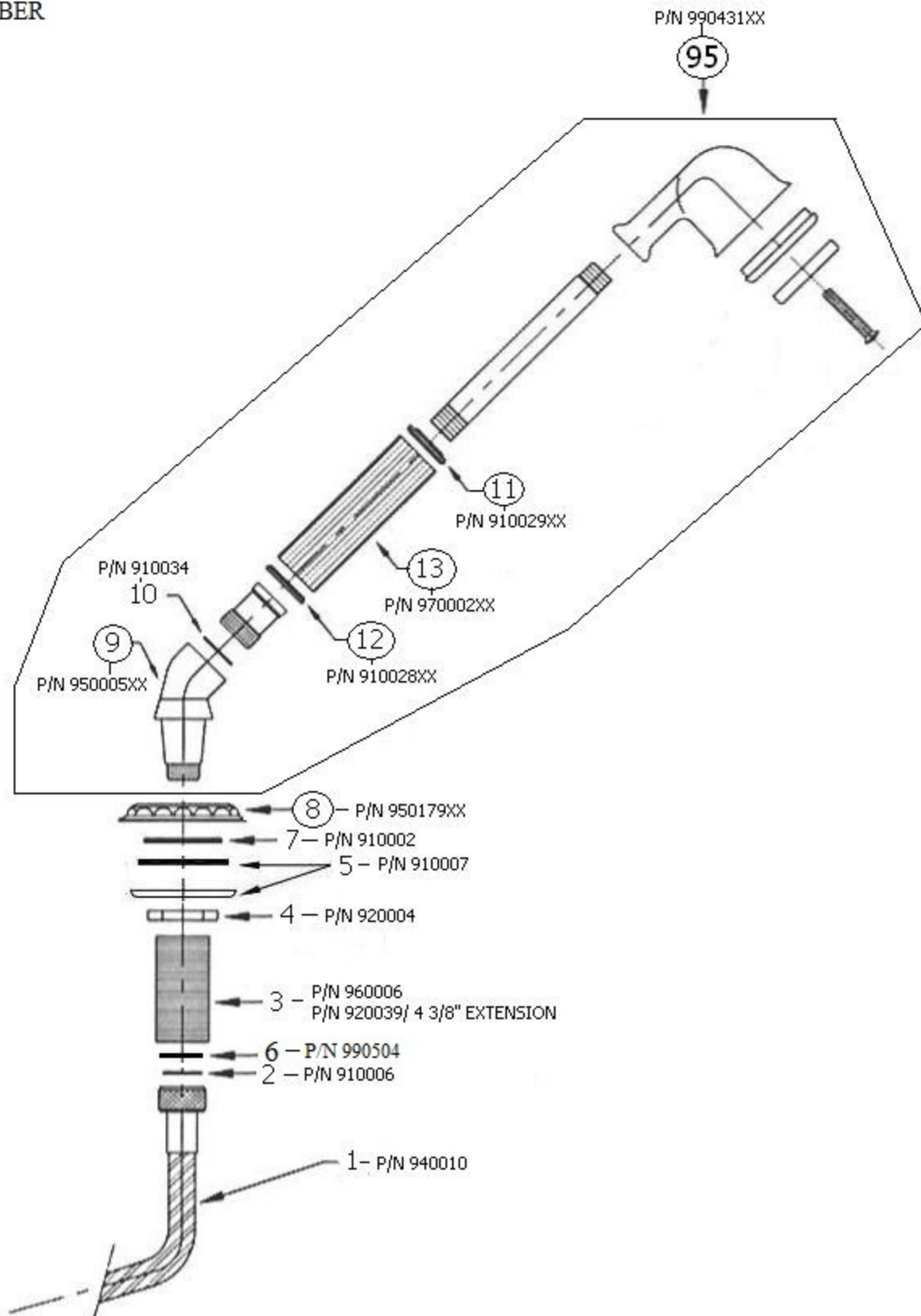
# 2244 - 'Pompadour' Personal Hand Shower



Hole Drilling =  $1 \frac{1}{4}"$

# 2244 - 'Pompadour' Personal Hand Shower

\*P/N = PART NUMBER



○ = FINISHED PARTS

XX = TWO DIGIT FINISH CODE