



California Faucets®

Terra Mar®

WIDESPREAD LAVATORY FAUCET

7802

Features

- Over 28 finishes including 13 PVD finishes
- All brass construction
- 6" [152] spout center to center
- 1/4 turn ceramic disc cartridge(s)
- Flexible braided hoses for ease of installation
- ϕ 1-1/4" all brass touch stle pop up drain assembly
- 1.2 gpm (4.5 L/min) max flow rate

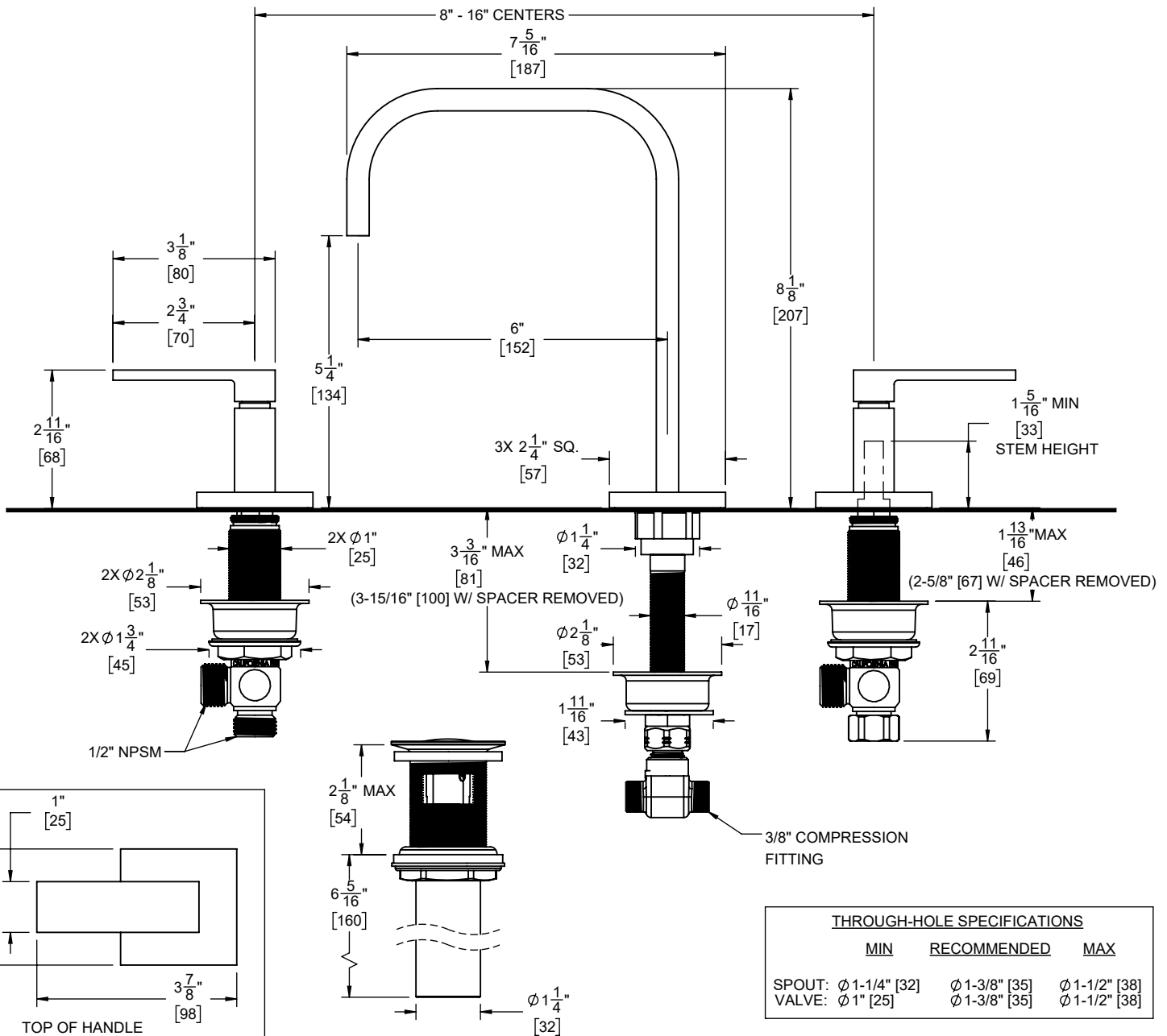
Codes/Standards Applicable

Meets or exceeds the following:

- ASME A112.18.1/CSA B125.1
- NSF/ANSI 61 & NSF/ANSI 372
- CEC / DOE
- EPA WaterSense High Efficiency Lavatory
- Commonwealth of MA
- ADA compliant



7802 shown



SPECIFICATIONS SUBJECT TO CHANGE WITHOUT NOTICE

DIMENSIONS SHOWN TO NEAREST 1/16"
[DIMENSIONS SHOWN TO NEAREST 1mm]